



A.R16

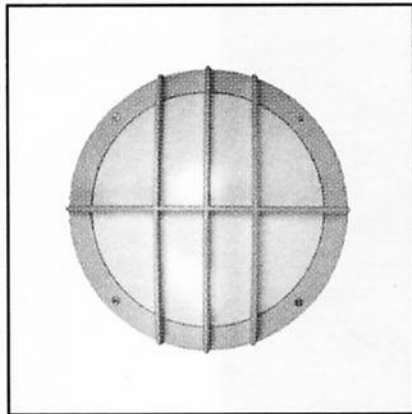
ARN-15

ARCHITECTURAL / HIGH ABUSE

ARCHITECTURAL
ROUND
SLIM PROFILE, CROSS GUARD FACEPLATE
SURFACE FLUORESCENT

15 in. Round

LIGHTING FOR COMPLEX ENVIRONMENTS



These **Slim Profile**, aesthetically pleasing Architectural fixtures feature die cast aluminum Housing, molded unbreakable lens and optional tamperproof screws, which help ARN Series withstand severe punishment, and make them ideally suited for both every day and high abuse areas.

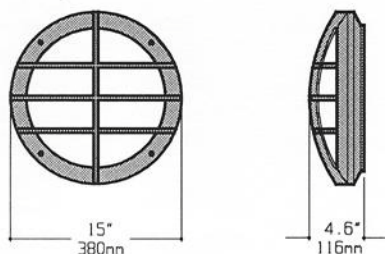
APPLICATIONS

- Building facades
- Schools / Universities
- Apartments / Condominiums / Public Housing
- Convenience Stores
- Government Facilities
- Hospitals

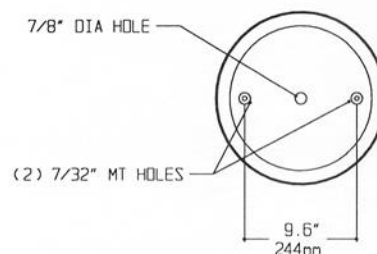
FEATURES

- Slim Profile cast aluminum Housing
- 15 in. diameter nominal size, 4.6 in. deep.
- Injection molded prismatic polycarbonate Refractor provides uniform illumination
- Optional Tamperproof Screws
- Ceiling or Wall mounted
- Non-corrosive durable coating
- Maintenance free, one time installation
- Stands up to physical impact and tampering
- Suitable for high pressure Hosedown

OVERALL DIMENSIONS



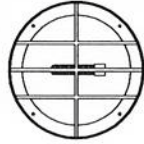
MOUNTING



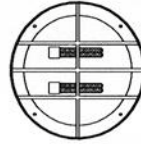
SPECIFICATIONS

HOUSING	Faceplate and Base in die cast aluminum. Silver color standard. Optional colors: White, Black, Bronze.	LAMPS	13W Twin, 13, 18, or 26W Quad, 32W PLT Lamps. See Lamp Options. (Lamps by others).
GASKET	Weather proof silicone Gasket around inside of Lens seals Lens to Housing.	BALLAST	NPF, self-start Class P, or electronic Ballast. (See Voltage, Ballast Options).
FASTENERS	(4) Captive stainless steel fasteners. (For tamperproof fasteners see Options).	FINISH	Polyester Powder coat finish. Silver standard. (See Color Options).
LENS	.156" Opal injection molded polycarbonate Lens for even illumination.	U.L. LISTED	Suitable for Wet Locations.

LAMP SELECTION



LAMPS: (1) 13W Twin
(1) 13W Quad
(1) 18W Quad
(1) 26W Quad
(1) 32W PLT



LAMPS: (2) 13W Twin
(2) 13W Quad
(2) 18W Quad
(2) 26W Quad

ORDERING INFORMATION

ARN-15 -

No. of LAMPS	WATTAGE	VOLTAGE	BALLAST	OPTIONS
1= 1 Lamp	13=13W Twin (1,2)	120=120 Volts	EB=Electronic Ballast	TH=Torx Head TP Screw AH=Allen Head TP Screw
2= 2 Lamps	13Q=13W Quad (1,2) 18Q=18W Quad (1,2) 26Q=26W Quad (1,2) 32P=32W PLT (1)	277=277 Volts 347=347 Volts UNV=120-277 Volts	MB=Magnetic Ballast EBH=Electronic Ballast <10% THD	BRZ=Bronze Finish WHT=White Finish BLK=Black Finish

(More than one Option can be specified)

EXAMPLE: ARN - 15 - 2 - 18Q - 277 - EB - AH

DESCRIPTION: ARN - 15 = Series ARN, 15 inches round nominal size
 2 = 2 Lamps
 18Q = 18 Watts Quad Tube
 277 = 277 Volt Operation
 EB = Electronic Ballast
 AH = Allen Head TP Screws

FIXTURE TYPE		COMMENTS
CATALOG NUMBER	ARN-15-	
JOB NAME		
APPROVAL		
DATE		