

LIGHTING FOR COMPLEX ENVIRONMENTS

APPLICATIONS

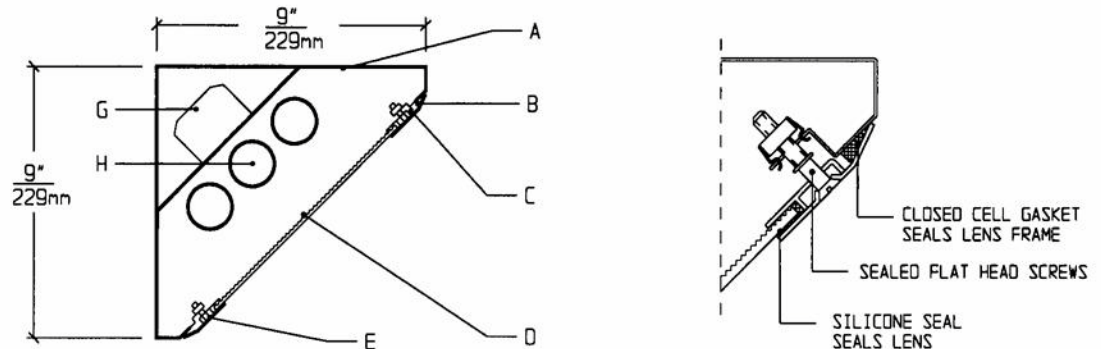
- Cleanrooms
- Food processing centers
- Hospitals
- Pharmaceutical and Biological labs
- Wet Locations

Totally sealed Housings with sealed overlap Lens Frames, silicone set lenses, captive flat head screws, and uniform lighting make CCA Series ideally suited for CLEANROOM, Hospital, Food processing, and Scientific lab areas, where contamination free environment is a must.

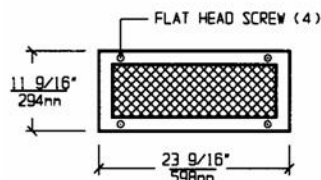
FEATURES

- 2 foot long, sealed, painted white, 20ga. Housing
- Suitable for high pressure Hosedown
- (4) mounting holes on each surface
- Overlap Lens Frame is gasketed and seals to Housing
- Lens is silicone sealed to Lens Frame
- Low brightness Lens installed smooth side to room
- Captive flat head Screws (4)
- Manufactured in accordance to NSF, FDA, USDA and Federal Standard 209D
- Suitable for Class 10 - Class 100,000 Cleanrooms
- IP-65 rated

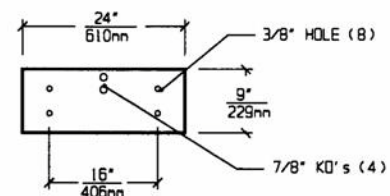
CROSS SECTION



LENS FRAME DIMENSIONS



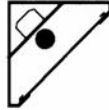
TOP VIEW



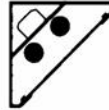
SPECIFICATIONS

<p>A. HOUSING Die formed 20 gauge cold rolled steel Housing, with welded seams. Painted white.</p> <p>B. LENS FRAME Die formed one piece 18 gauge cold rolled steel Lens Frame. Painted white.</p> <p>C. GASKET Closed cell gaskets and silicone seal prevent air and contaminants from entering the room.</p> <p>D. LENS Low brightness Lens with prisms up and smooth side to room for ease of cleaning. (See Options).</p> <p>E. FASTENERS Flush, captive stainless steel screws apply even pressure against Lens Frame.</p>	<p>F. HINGE Two "shadow free" detachable chains for ease of installation and maintenance.</p> <p>G. BALLAST HPF, Class P, Energy saving Ballast (See Voltage, Ballast Options).</p> <p>H. LAMPS 17W T-8, 14W T-5, 24W T-5HO, 40W Biax or 31W U-Lamps. See Lamp Options. (Lamps by others).</p> <p>I. FINISH Polyester Powder coat white finish with 92% reflectance.</p> <p>J. UL LISTED Suitable for Wet Locations.</p>
--	---

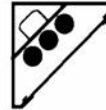
LAMP SELECTION



LAMPS: (1) 17W T-8
(1) 14W T-5
(1) 24W T-5HO



LAMPS: (2) 17W T-8
(2) 14W T-5
(2) 24W T-5HO



LAMPS: (3) 17W T-8
(3) 14W T-5
(3) 24W T-5HO

ORDERING INFORMATION

CCA-2 -

No. of LAMPS	WATTAGE	VOLTAGE	BALLAST	LENS OPTION	OPTIONS
1=1 Lamp (All)	17=17 Watts (T-8)	120=120 Volts 277=277 Volts	EB=Electronic Ballast	12PA=. 125" Prism. Acrylic 15PA=. 156" Prism. Acrylic 15PG=. 156" Prism. Glass 18PP=. 187" Prism. P/C	TP=Tamperproof Screws GF=GFR Fuse
2=2 Lamps (Except U)	14=14 Watts (T-5)	347=347 Volts	MB=Magnetic Ballast	UO=UV Absorbing Overlay	NL=Night Light (PL-7 or 9) DB=Dimming Ballast
3=3 Lamps (Except U and Biax)	24=24 Watts (T-5HO) 40BX=40 Watts (Biax Twin Tube) 31U=31 Watts U (1-5/8" Spacing)		EB2=(2) Electr. Ballasts (w/o EM) EBH=<10% THD El. Ballast	(Other Lens Options available. Consult Factory)	EM=Emergency Lighting (T-3/Biax/U) CW=Cold Weather Ballast RF=Radio Frequency Interference Filter
				(More than one Option can be specified)	AHP=Aluminum Housing Painted AFP=Aluminum Lens Frame, Painted AFA=Aluminum Lens Frame, Anodized SHP=Stainless Steel Housing, Painted SFP=Stainless Steel Lens Frame, Painted SFN=Stainless Steel Lens Frame, Natural

EXAMPLE: CCA - 2 - 2 - 17 - 277 - EB - 12PA - GF - NL

DESCRIPTION: CCA - 2 = Series CCA, 2 feet long nominal size
 2 = 2 Lamps
 17 = 17 Watts T-8 Lamps
 277 = 277 Volt Operation
 EB = Electronic Ballast
 12PA = .125" Thick Prismatic Acrylic
 GF = GLR Fuse
 NL = Night Light for PL-7 or 9

FIXTURE TYPE		COMMENTS
CATALOG NUMBER	CCA-2-	
JOB NAME		
APPROVAL		
DATE		