

**APPLICATIONS**

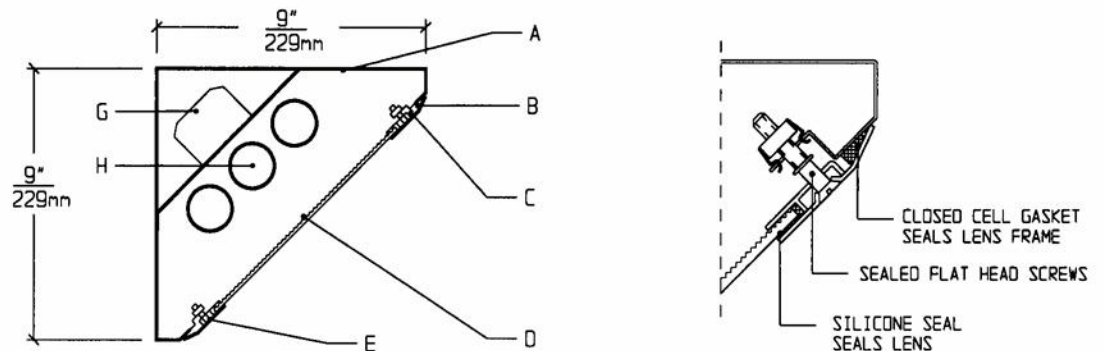
- Cleanrooms
- Food processing centers
- Hospitals
- Pharmaceutical and Biological labs
- Wet Locations

Totally sealed Housings with sealed overlap Lens Frames, silicone set lenses, captive flat head screws, and uniform lighting make CCA Series ideally suited for CLEANROOM, Hospital, Food processing, and Scientific lab areas, where contamination free environment is a must.

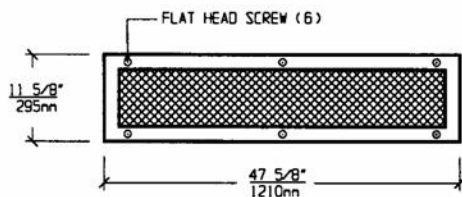
**FEATURES**

- 4 foot long, sealed, painted white, 20ga. Housing
- Suitable for high pressure Hosedown
- (6) mounting holes on each surface
- Overlap Lens Frame is gasketed and seals to Housing
- Lens is silicone sealed to Lens Frame
- Low brightness Lens installed smooth side to room
- Captive flat head Screws (6)
- Manufactured in accordance to NSF, FDA, USDA, Federal Standard 209E and IP-65
- Suitable for Class 10 - Class 100,000 Cleanrooms
- IP-65 rated

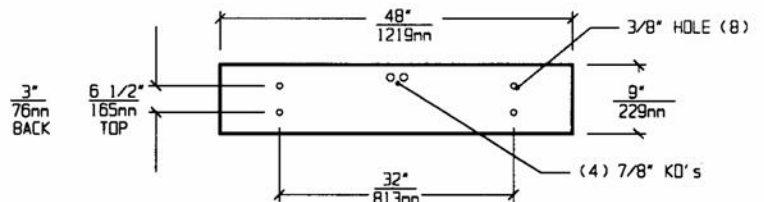
**CROSS SECTION**



**LENS FRAME DIMENSIONS**



**TOP/ BACK VIEW**



**SPECIFICATIONS**

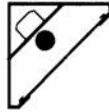
<p><b>A. HOUSING</b> Die formed 20 gauge cold rolled steel Housing, with welded seams. Painted white.</p> <p><b>B. LENS FRAME</b> Die formed one piece 18 gauge cold rolled steel Lens Frame. Painted white.</p> <p><b>C. GASKET</b> Closed cell gaskets and silicone seal prevent air and contaminants from entering the room.</p> <p><b>D. LENS</b> Low brightness Lens with prisms up and smooth side to room for ease of cleaning. (See Options).</p> <p><b>E. FASTENERS</b> Flush, captive stainless steel screws apply even pressure against Lens Frame.</p>	<p><b>F. HINGE</b> Two "shadow free" detachable chains for ease of installation and maintenance.</p> <p><b>G. BALLAST</b> HPF, Class P, Energy saving Ballast (See Voltage, Ballast Options).</p> <p><b>H. LAMPS</b> 32W T-8, 28W T-5, 54W T-5HO lamps. See Lamp Options. (Lamps by others).</p> <p><b>I. FINISH</b> Polyester Powder coat white finish with 92% reflectance.</p> <p><b>J. UL LISTED</b> Suitable for Wet Locations.</p>
--	--

# CD Lighting

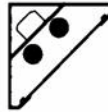
3.M1

**CCA-4**  
4 ft. long

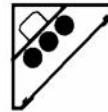
## LAMP SELECTION



LAMPS: (1) 32W T-8  
(1) 28W T-5  
(1) 54W T-5 HO



LAMPS: (2) 32W T-8  
(2) 28W T-5  
(2) 54W T-5 HO



LAMPS: (3) 32W T-8  
(3) 28W T-5  
(3) 54W T-5 HO

## ORDERING INFORMATION

### CCA-4 -

No. of LAMPS	WATTAGE	VOLTAGE	BALLAST	LENS OPTION	OPTIONS
1=1 Lamp	32=32 Watts (T-8)	120=120 Volts 277=277 Volts	EB=Electronic Ballast	12PA=.125" Prism. Acrylic 15PA=.156" Prism. Acrylic 15PG=.156" Prism. Glass 18PP=.187" Prism. P/C	TP=Tamperproof Screws GF=GLR Fuse NL=Night Light (PL-7 or9) DB=Dimming Ballast EM=Emergency Lighting CW=Cold Weather Ballast RF=Radio Frequency Interference Filter AHP=Aluminum Housing Painted AFP=Aluminum Lens Frame, Painted AFA=Aluminum Lens Frame, Anodized SHP=Stainless Steel Housing, Painted SFP=Stainless Steel Lens Frame, Painted SFN=Stainless Steel Lens Frame, Natural
2=2 Lamps	28=28 Watts (T-5)	347=347 Volts	MB=Magnetic Ballast	UO=UV Absorbing Overlay	
3=3 Lamps	54=54 Watts (T-5 HO)		EB2=(2) Electr. Ballasts EBH=<10% THD El. Ballast	(Other Lens Options available. Consult Factory)	

(More than one Option  
can be specified)

**EXAMPLE: CCA - 4 - 2 - 32 - 277 - EB - 12PA - GF - NL**

**DESCRIPTION:** **CCA - 4** = Series CCA, 4 feet long nominal size  
**2** = 2 Lamps  
**32** = 32 Watts T-8 Lamps  
**277** = 277 Volt Operation  
**EB** = Electronic Ballast  
**12PA** = .125" Thick Prismatic Acrylic  
**GF** = GLR Fuse  
**NL** = Night Light for PL-7 or 9

FIXTURE TYPE		COMMENTS
CATALOG NUMBER	CCA-4-	
JOB NAME		
APPROVAL		
DATE		