



## CLEANROOM

FLANGED, RECESSED  
EXTRUDED LENS FRAME  
FLUORESCENT TROFFER

1' X 2'

### APPLICATIONS

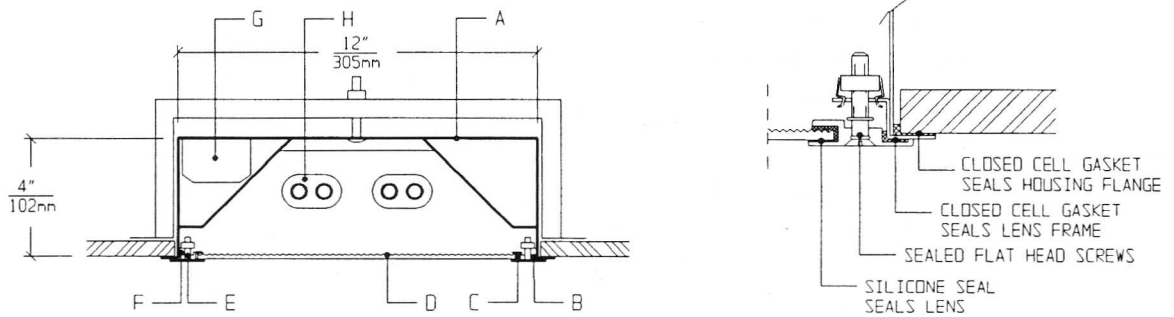
- Cleanrooms
- Food processing centers
- Hospitals
- Pharmaceutical and Biological labs
- Wet Locations

Totally sealed housings with extruded Lens Frames, silicone set lenses, sealed flat head screws, and uniform lighting make CFB Series ideally suited for CLEANROOM, Hospital, Food processing, and Scientific lab areas, where contamination free environment is a must.

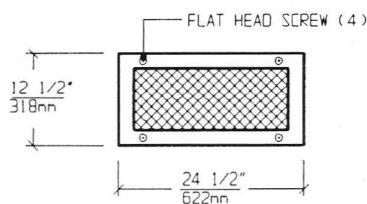
### FEATURES

- ♦ Sealed, 20 gauge Housing, with Flanges gasketed to ceiling to keep plenum air from entering the room
- ♦ 1' X 2' nominal Housing size
- ♦ Extruded gasketed Lens Frame seals to Housing Flanges
- ♦ Lens is silicone sealed to Lens Frame
- ♦ Gasketed Access Plate.
- ♦ Low brightness Lens installed smooth side to room
- ♦ Sealed, captive flat head Screws (4)
- ♦ Manufactured in accordance to NSF, FDA, USDA and Federal Standard 209D
- ♦ Gasketed Mounting Yokes

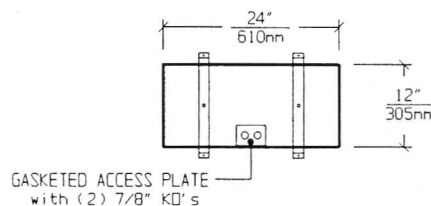
### CROSS SECTION



### LENS FRAME DIMENSIONS



### TOP VIEW

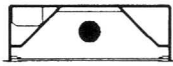


CEILING CUT-OUT:  
12 1/4" X 24 1/4"

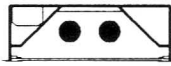
### SPECIFICATIONS

<b>A. HOUSING</b>	Die formed 20 gauge cold rolled steel Housing, with welded seams. Painted white.	<b>F. HINGE</b>	Two "shadow free" detachable chains for ease of installation and maintenance.
<b>B. LENS FRAME</b>	Heavy aluminum extrusion with sealed mitered corners. Painted white to match Housing.	<b>G. BALLAST</b>	HPF, Class P, Energy saving Ballast (See Voltage, Ballast Options).
<b>C. GASKET</b>	Closed cell gaskets and silicone seal prevent air and contaminants from entering the room.	<b>H. LAMPS</b>	17W T-8, 20W T-12 or 40W Biax Lamps. See Lamp Options. (Lamps by others).
<b>D. LENS</b>	Low brightness Lens with prisms up and smooth side to room for ease of cleaning. (See Options).	<b>I. FINISH</b>	Polyester Powder coat white finish with 92% reflectance.
<b>E. FASTENERS</b>	Sealed, flush, captive stainless steel screws apply even pressure against Lens Frame.	<b>J. UL LISTED</b>	Suitable for Wet Locations.

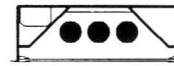
LAMP SELECTION



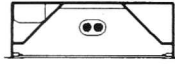
LAMPS: (1) 17W T-8  
(1) 20W T-12



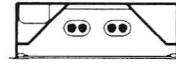
LAMPS: (2) 17W T-8  
(2) 20W T-12



LAMPS: (3) 17W T-8  
(3) 20W T-12



LAMPS: (1) 40W BIA-X



LAMPS: (2) 40W BIA-X

ORDERING INFORMATION

CFB - 12 -

No. of LAMPS	WATTAGE	VOLTAGE	BALLAST	LENS OPTION	OPTIONS
1=1 Lamp	17=17 Watts	120=120 Volts	EB=Electronic	12PA=.125"Prism. Acrylic	TP=Tamperproof screws
2=2 Lamps	(T- 8)	277=277 Volts	Ballast	15PA=.156"Prism. Acrylic	GF=GLR Fuse
3=3 Lamps	20=20 Watts		MB=Magnetic	15PG=.156"Prism. Glass	NL=Night Light(PL-7or 9)
(T lamps only)	(T-12)		Ballast	18CP=.187"Clear P/C	DB=Dimming Ballast
	40BX=40 Watts			UO = UV Absorbing	EM=Emergency Lighting
	(Biax Twin Tube)			Overlay	CW=Cold Weather Ballast
				(Other Lens Options available. Consult Factory)	RF=Radio Frequency Interference Filter
					AH=Aluminum Housing
					SH=Stainless Steel Housing
					(More than one Option can be specified)

EXAMPLE: CFB - 12 - 2 - 40BX - 277 - EB - 12PA - GF - NL

DESCRIPTION: CFB - 12 = Series CFB, 1 foot by 2 feet nominal size  
 2 = 2 Lamps  
 40BX = 40 Watts Biax Twin Tube Lamps  
 277 = 277 Volt Operation  
 EB = Electronic Ballast  
 12PA = .125" Thick Prismatic Acrylic  
 GF = GLR Fuse  
 NL = Night Light for PL - 7 or 9

FIXTURE TYPE		COMMENTS
CATALOG NUMBER	CFB-12-	
JOB NAME		
APPROVAL		
DATE		

Dimensions and Specifications subject to change without notice  
 Fixture guaranteed for one year against mechanical defects in manufacture.  
 5-95 CFB-12