

LIGHTING FOR COMPLEX ENVIRONMENTS

2' X 4'

APPLICATIONS

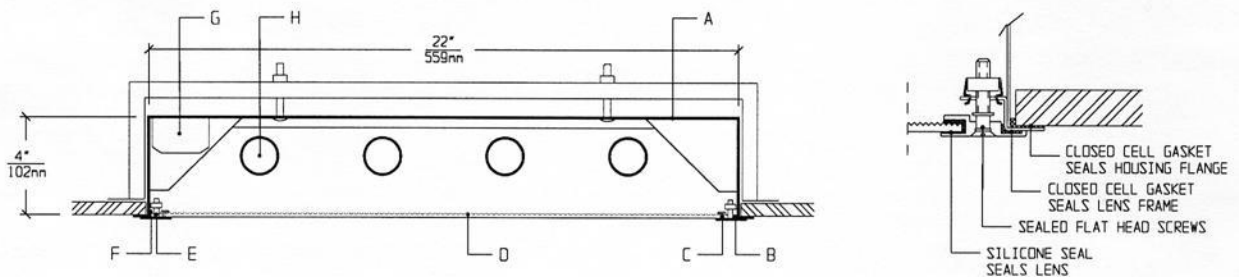
- Cleanrooms
- Food processing centers
- Hospitals
- Pharmaceutical and Biological labs
- Wet Locations

Totally sealed Housings with extruded sealed Lens Frames, silicone set lenses, sealed flat head screws, and uniform lighting make CFB Series ideally suited for CLEANROOM, Hospital, Food processing, and Scientific lab areas, where contamination free environment is a must.

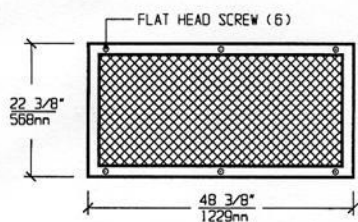
FEATURES

- 2' X 4' Sealed, 20 gauge Housing, with Flanges gasketed to ceiling to keep plenum air from entering the room
- Suitable for Class 10 - Class 100,000 Cleanrooms
- Extruded gasketed Lens Frame seals to Housing Flanges
- Lens is silicone sealed to Lens Frame
- Gasketed Access Plate (Optional Internal Junction Box)
- Low brightness Lens installed smooth side to room
- Sealed, captive flat head Screws (6). (8 screws optional)
- Manufactured in accordance to NSF, FDA, USDA and Federal Standard 209E
- Gasketed Mounting Yokes
- IP-65 rated

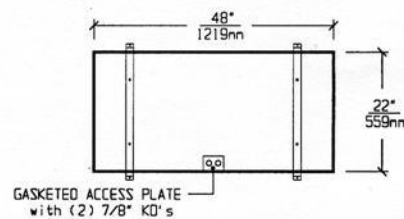
CROSS SECTION



LENS FRAME DIMENSIONS



TOP VIEW

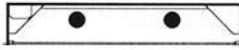


CEILING CUT-OUT:
22 1/4" X 48 1/4"

SPECIFICATIONS

<p>A. HOUSING Die formed 20 gauge cold rolled steel Housing, with welded seams. Painted white.</p> <p>B. LENS FRAME Heavy aluminum extrusion with sealed mitered corners. Painted white to match Housing.</p> <p>C. GASKET Closed cell gaskets and silicone seal prevent air and contaminants from entering the room.</p> <p>D. LENS Low brightness Lens with prisms up and smooth side to room for ease of cleaning. (See Options).</p> <p>E. FASTENERS Sealed, flush, captive stainless steel screws apply even pressure against Lens Frame.</p>	<p>F. HINGE Two "shadow free" detachable chains for ease of installation and maintenance.</p> <p>G. BALLAST HPF, Class P, Energy saving Ballast. (See Voltage, Ballast Options).</p> <p>H. LAMPS 32W T-8, 28W T-5 or 54W T-5 HO Lamps. See Lamp Options (Lamps by others).</p> <p>I. FINISH Polyester Powder coat white finish with 92% reflectance.</p> <p>J. UL LISTED Suitable for Wet Locations.</p>
---	---

LAMP SELECTION



LAMPS: (2) 32W T-8
(2) 28W T-5
(2) 54W T-5HO



LAMPS: (3) 32W T-8
(3) 28W T-5
(3) 54W T-5HO



LAMPS: (4) 32W T-8
(4) 28W T-5
(4) 54W T-5HO

ORDERING INFORMATION

CFB-24 -

No. of LAMPS	WATTAGE	VOLTAGE	BALLAST	LENS OPTION	OPTIONS
2=2 Lamps	32=32 Watts	120=120 Volts	EB=Electronic Ballast	12PA=.125" Prism. Acrylic	TP=Tamperproof Screws
3=3 Lamps	(T-8)	277=277 Volts	MB=Magnetic Ballast	15PA=.156" Prism. Acrylic	GF=GLR Fuse
4=4 Lamps	28=28 Watts	347=347 Volts	EB2=(2) Electr. Ballasts	15PG=.156" Prism. Glass	NL=Night Light (PL-7 or 9)
6=6 Lamps	(T-5)		EBH=<10% THD El. Ballast	15PP=.156" Prism. P/C	DB=Dimming Ballast
	54=54 Watts			(Other Lens Options available. Consult Factory)	EM=Emergency Lighting
	(T-5HO)				CW=Cold Weather Ballast
					RF=Radio Frequency Interference Filter
					JB=Internal Junction Box
					AHP=Aluminum Housing Painted
					SHP=Stainless Steel Housing, Painted
					8S=8 Screws in Frame

(More than one Option can be specified)

EXAMPLE: CFB - 24 - 4 - 32 - 277 - EB - 12PA - GF - NL

DESCRIPTION: CFB - 24 = Series CFB, 2 feet by 4 feet nominal size
 4 = 4 Lamps
 32 = 32 Watts T-8 Lamps
 277 = 277 Volt Operation
 EB = Electronic Ballast
 12PA = .125" Thick Prismatic Acrylic
 GF = GLR Fuse
 NL = Night Light for PL-7 or 9

FIXTURE TYPE		COMMENTS
CATALOG NUMBER	CFB-24-	
JOB NAME		
APPROVAL		
DATE		

Dimensions and Specifications subject to change without notice
 Fixture guaranteed for one year against mechanical defects in manufacture.
 Copyright 2-10 CFB-24