



CLEANROOM

GRID, RECESSED
ONE PIECE LENS FRAME
FLUORESCENT TROFFER

1' X 2'

APPLICATIONS

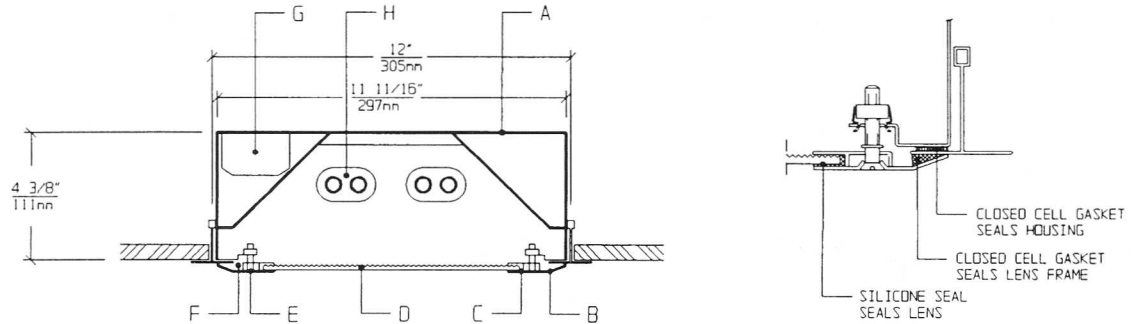
- Cleanrooms
- Food processing centers
- Hospitals
- Pharmaceutical and Biological labs
- Wet Locations

Totally sealed housings with one piece Lens Frames, silicone set lenses, captive flat head screws, and uniform lighting make CGA Series ideally suited for CLEANROOM, Hospital, Food processing, and Scientific lab areas, where contamination free environment is a must.

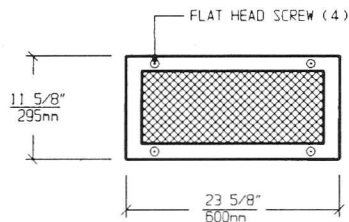
FEATURES

- ♦ Sealed, painted white, 20 gauge Housing seals to grid
- ♦ 1' X 2' nominal Housing size
- ♦ Works with 1", 1 1/2" and 2" inverted "T" ceiling grid
- ♦ One piece Lens Frame is gasketed and seals to grid
- ♦ Lens is silicone sealed to Lens Frame
- ♦ Gasketed Access Plate
- ♦ Low brightness Lens installed smooth side to room
- ♦ Captive flat head Screws (4)
- ♦ Manufactured in accordance to NSF, FDA, USDA and Federal Standard 209D

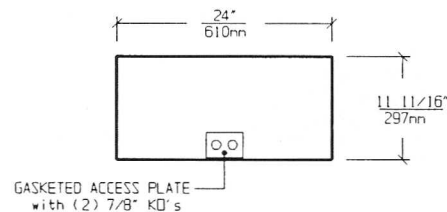
CROSS SECTION



LENS FRAME DIMENSIONS



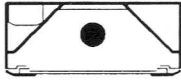
TOP VIEW



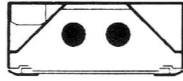
SPECIFICATIONS

A. HOUSING	Die formed 20 gauge cold rolled steel Housing, with welded seams. Painted white.	F. HINGE	Two "shadow free" detachable chains for ease of installation and maintenance.
B. LENS FRAME	Die formed one piece 18 gauge cold rolled steel Lens Frame. Painted white.	G. BALLAST	HPF, Class P, Energy saving (See Voltage, Ballast Options).
C. GASKET	Closed cell gaskets and silicone seal prevent air and contaminants from entering the room.	H. LAMPS	17W T-8, 20W T-12 or 40W Biax Twin Tube Lamps. See Lamp Options. (Lamps by others).
D. LENS	Low brightness Lens with prisms up and smooth side to room for ease of cleaning. (See Options).	I. FINISH	Polyester Powder coat white finish with 92% reflectance.
E. FASTENERS	Flush, captive stainless steel screws apply even pressure against Lens Frame.	J. UL LISTED	Suitable for Wet Locations.

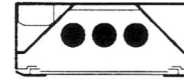
LAMP SELECTION



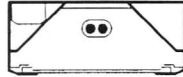
LAMPS: (1) 17W T-8
(1) 20W T-12



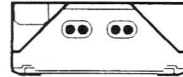
LAMPS: (2) 17W T-8
(2) 20W T-12



LAMPS: (3) 17W T-8
(3) 20W T-12



LAMPS: (1) 40W BIAx



LAMPS: (2) 40W BIAx

ORDERING INFORMATION

CGA - 12 -

No. of LAMPS	WATTAGE	VOLTAGE	BALLAST	LENS OPTION	OPTIONS
1=1 Lamp	17=17 Watts	120=120 Volts	EB=Electronic	12PA=.125"Prism. Acrylic	TP=Tamperproof screws
2=2 Lamps	(T- 8)	277=277 Volts	Ballast	15PA=.156"Prism. Acrylic	GF=GLR Fuse
3=3 Lamps	20=20 Watts		MB=Magnetic	15PG=.156"Prism. Glass	NL=Night Light(PL-7or 9)
(T lamps	(T-12)		Ballast	18CP=.187"Clear P/C	DB=Dimming Ballast
only)	40BX=40 Watts			UO = UV Absorbing	EM=Emergency Lighting
	Biax Twin Tube			Overlay	CW=Cold Weather Ballast
				(Other Lens Options available. Consult Factory)	RF=Radio Frequency Interference Filter
					AH=Aluminum Housing
					AF=Aluminum Lens Frame
					SH=Stainless Steel Housing
					SF=Stainless Steel Lens Frame
					(More than one Option can be specified)

EXAMPLE: CGA - 12 - 2 - 40BX - 277 - EB - 12PA - GF - NL

DESCRIPTION: CGA-12 = Series CGA, 1 foot by 2 feet nominal size
 2 = 2 Lamps
 40BX = 40 Watts Biax Twin Tube Lamps
 277 = 277 Volt Operation
 EB = Electronic Ballast
 12PA = .125" Thick Prismatic Acrylic
 GF = GLR Fuse
 NL = Night Light for PL - 7 or 9

FIXTURE TYPE		COMMENTS
CATALOG NUMBER	CGA-12-	
JOB NAME		
APPROVAL		
DATE		

Dimensions and Specifications subject to change without notice
 Fixture guaranteed for one year against mechanical defects in manufacture.
 5-95 CGA-12