

APPLICATIONS

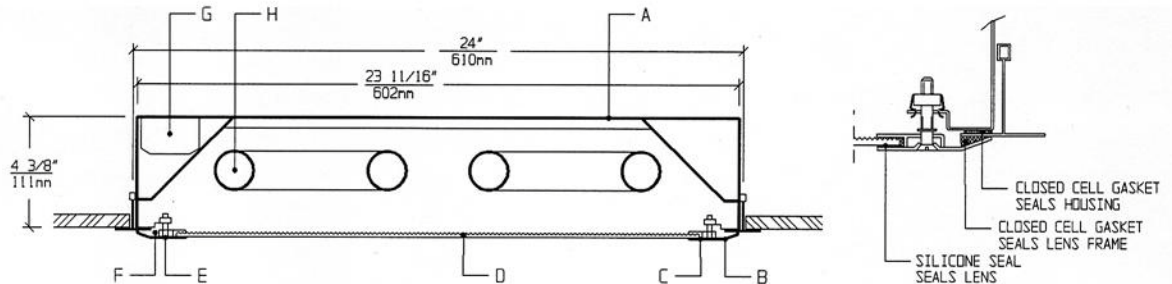
- Cleanrooms
- Food processing centers
- Hospitals
- Pharmaceutical and Biological labs
- Wet Locations

Totally sealed Housings with sealed overlap Lens Frames, silicone set lenses, captive flat head screws, and uniform lighting make CGA Series ideally suited for CLEANROOM, Hospital, Food processing, and Scientific lab areas, where contamination free environment is a must.

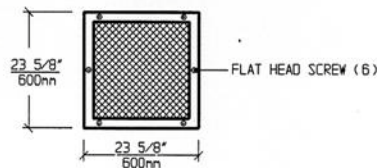
FEATURES

- 2' X 2' sealed, painted white, 20ga. Housing seals to grid
- Suitable for high pressure Hosedown
- Same Housing fits 1", 1-1/2" and 2" standard T-grid ceiling
- One piece Lens Frame is gasketed and seals to grid
- Lens is silicone sealed to Lens Frame
- Gasketed Access Plate (Optional Internal Junction Box)
- Low brightness Lens installed smooth side to room
- Captive flat head Screws (6)
- Manufactured in accordance to NSF, FDA, USDA and Federal Standard 209D
- Suitable for Class 10 - Class 100,000 Cleanrooms
- IP-65 rated

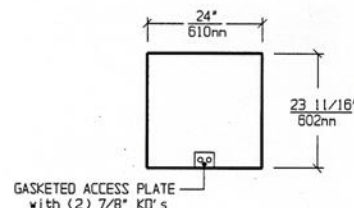
CROSS SECTION



LENS FRAME DIMENSIONS



TOP VIEW



SPECIFICATIONS

<p>A. HOUSING Die formed 20 gauge cold rolled steel Housing, with welded seams. Painted white.</p> <p>B. LENS FRAME Die formed one piece 18 gauge cold rolled steel Lens Frame. Painted white.</p> <p>C. GASKET Closed cell gaskets and silicone seal prevent air and contaminants from entering the room.</p> <p>D. LENS Low brightness Lens with prisms up and smooth side to room for ease of cleaning. (See Options).</p> <p>E. FASTENERS Flush, captive stainless steel screws apply even pressure against Lens Frame.</p>	<p>F. HINGE Two "shadow free" detachable chains for ease of installation and maintenance.</p> <p>G. BALLAST HPF, Class P, Energy saving (See Voltage, Ballast Options).</p> <p>H. LAMPS 17W T-8, 14W T-5, 24W T-5HO, 40W Biax or 40W U-Lamps. See Lamp Options. (Lamps by others).</p> <p>I. FINISH Polyester Powder coat white finish with 92% reflectance.</p> <p>J. UL LISTED Suitable for Wet Locations.</p>
--	---

LAMP SELECTION



LAMPS: (2) T-8 / T-5



LAMPS: (3) T-8 / T-5



LAMPS: (4) T-8 / T-5



LAMPS: (2) 32W U (6")



LAMPS: (2) 40W BIAx



LAMPS: (3) 40W BIAx

ORDERING INFORMATION

CGA-22 -

No. of LAMPS	WATTAGE	VOLTAGE	BALLAST	LENS OPTION	OPTIONS
2=2 Lamps (All)	17=17 Watts (T-8)	120=120 Volts 277=277 Volts	EB=Electronic Ballast	12PA=.125" Prism. Acrylic 15PA=.156" Prism. Acrylic	TP=Tamperproof Screws GF=GLR Fuse
3=3 Lamps (Except U)	14=14 Watts (T-5)	347=347 Volts	MB=Magnetic Ballast	15PG=.156" Prism. Glass 18PP=.187" Prism. P/C	NL=Night Light(PL-7 or9) DB=Dimming Ballast
4=4 Lamps (Except U and Biax)	24=24 Watts (T-5HO) 40BX=40 Watts (Biax Twin Tube) 32U=32 Watts U (6" Spacing)		EB2=(2) Electr. Ballasts EBH=<10% THD El. Ballast	UO=UV Absorbing Overlay (Other Lens Options available. Consult Factory)	EM=Emergency Lighting CW=Cold Weather Ballast RF=Radio Frequency Interference Filter JB=Internal Junction Box AHP=Aluminum Housing Painted AFP=Aluminum Lens Frame, Painted AFA=Aluminum Lens Frame, Anodized SHP=Stainless Steel Housing, Painted SFP=Stainless Steel Lens Frame, Painted SFN=Stainless Steel Lens Frame, Natural SG=Special Grid Housing (Specify Grid)

(More than one Option
can be specified)

EXAMPLE: CGA - 22 - 2 - 32U - 277 - EB - 12PA - GF - NL

DESCRIPTION: **CGA - 22** = Series CGA, 2 feet by 2 feet nominal size
2 = 2 Lamps
32U = 32 Watts U Lamps (6" Spacing)
277 = 277 Volt Operation
EB = Electronic Ballast
12PA = .125" Thick Prismatic Acrylic
GF = GLR Fuse
NL = Night Light for PL-7 or 9

FIXTURE TYPE		COMMENTS
CATALOG NUMBER	CGA-22-	
JOB NAME		
APPROVAL		
DATE		