

LIGHTING FOR COMPLEX ENVIRONMENTS

APPLICATIONS

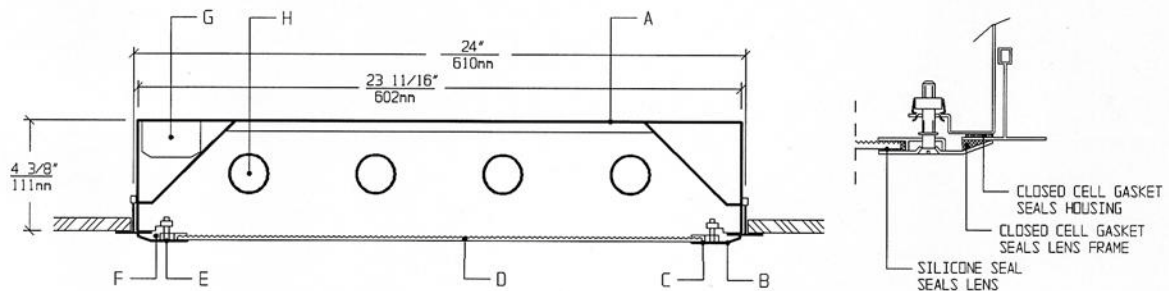
- Cleanrooms
- Food processing centers
- Hospitals
- Pharmaceutical and Biological labs
- Wet Locations

Totally sealed Housings with sealed overlap Lens Frames, silicone set lenses, captive flat head screws, and uniform lighting make CGA Series ideally suited for CLEANROOM, Hospital, Food processing, and Scientific lab areas, where contamination free environment is a must.

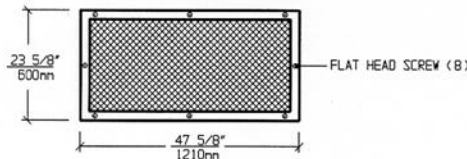
FEATURES

- 2' X 4' sealed, painted white, 20ga. Housing seals to grid
- Suitable for high pressure Hosedown
- Same Housing fits 1", 1-1/2" and 2" standard T-grid ceiling
- Overlap 18ga. Lens Frame is gasketed and seals to grid
- Lens is silicone sealed to Lens Frame
- Gasketed Access Plate (Optional Internal Junction Box)
- Low brightness Lens installed smooth side to room
- Captive flat head Screws (8)
- Manufactured in accordance to NSF, FDA, USDA and Federal Standard 209D
- Suitable for Class 10 - Class 100,000 Cleanrooms
- IP-65 rated

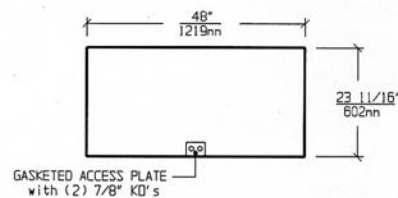
CROSS SECTION



LENS FRAME DIMENSIONS



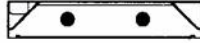
TOP VIEW



SPECIFICATIONS

<p>A. HOUSING Die formed 20 gauge cold rolled steel Housing, with welded seams. Painted white.</p> <p>B. LENS FRAME Die formed one piece 18 gauge cold rolled steel Lens Frame.</p> <p>C. GASKET Closed cell gaskets and silicone seal prevent air and contaminants from entering the room.</p> <p>D. LENS Low brightness Lens with prisms up and smooth side to room for ease of cleaning. (See Options).</p> <p>E. FASTENERS Flush, captive stainless steel screws apply even pressure against Lens Frame.</p>	<p>F. HINGE Two "shadow free" detachable chains for ease of installation and maintenance.</p> <p>G. BALLAST HPF, Class P, Energy saving (See Voltage, Ballast Options).</p> <p>H. LAMPS 32W T-8, 28W T-5 or 54W T-5 HO Lamps. See Lamp Options (Lamps by others).</p> <p>I. FINISH Polyester Powder coat white finish with 92% reflectance.</p> <p>J. UL LISTED Suitable for Wet Locations.</p>
---	--

LAMP SELECTION



LAMPS: (2) 32W T-8
(2) 28W T-5
(2) 54W T-5HO



LAMPS: (3) 32W T-8
(3) 28W T-5
(3) 54W T-5HO



LAMPS: (4) 32W T-8
(4) 28W T-5
(4) 54W T-5HO

ORDERING INFORMATION

CGA-24 -

No. of LAMPS	WATTAGE	VOLTAGE	BALLAST	LENS OPTION	OPTIONS
2=2 Lamps	32=32 Watts	120=120 Volts	EB=Electronic Ballast	12PA= .125" Prism. Acrylic	TP=Tamperproof Screws
3=3 Lamps	(T-8)	277=277 Volts	MB=Magnetic Ballast	15PA= .156" Prism. Acrylic	GF=GLR Fuse
4=4 Lamps	28=28 Watts	347=347 Volts	EB2=(2) Electr. Ballasts	15PG= .156" Prism. Glass	NL=Night Light(PL-7 or9)
6=6 Lamps	(T-5)		EBH=<10% THD El. Ballast	18PP= .187" Prism. P/C	DB=Dimming Ballast
	54=54 Watts			UO=UV Absorbing Overlay	EM=Emergency Lighting
	(T-5HO)			(Other Lens Options available. Consult Factory)	CW=Cold Weather Ballast
					RF=Radio Frequency Interference Filter
					JB=Internal Junction Box
					AHP=Aluminum Housing Painted
					AFP=Aluminum Lens Frame, Painted
					AFA=Aluminum Lens Frame, Anodized
					SHP=Stainless Steel Housing, Painted
					SFP=Stainless Steel Lens Frame, Painted
					SFN=Stainless Steel Lens Frame, Natural
					SG=Special Grid Housing (Specify Grid)

EXAMPLE: CGA - 24 - 4 - 32 - 277 - EB - 12PA - GF - NL

DESCRIPTION: **CGA - 24** = Series CGA, 2 feet by 4 feet nominal size
4 = 4 Lamps
32 = 32 Watts T-8 Lamps
277 = 277 Volt Operation
EB = Electronic Ballast
12PA = .125" Thick Prismatic Acrylic
GF = GLR Fuse
NL = Night Light for PL-7 or 9

FIXTURE TYPE		COMMENTS
CATALOG NUMBER	CGA-24-	
JOB NAME		
APPROVAL		
DATE		