

APPLICATIONS

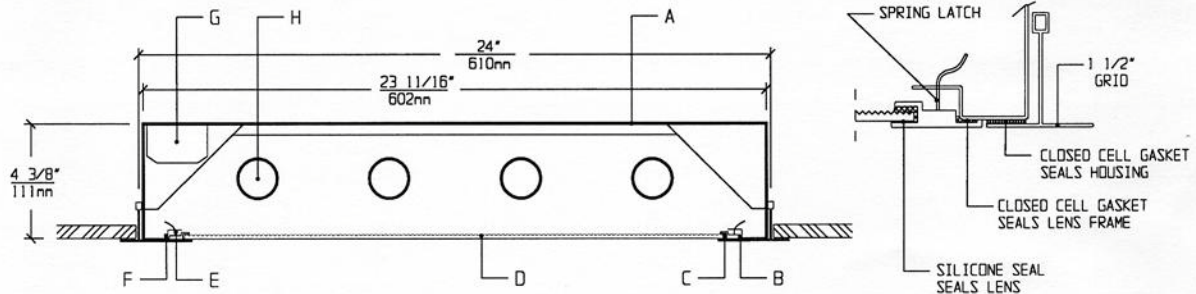
- Cleanrooms
- Food processing centers
- Hospitals
- Pharmaceutical and Biological labs
- Wet Locations

Totally sealed Housings with "Clean Look" Lens Frames with no visible hardware, silicone set lenses, and uniform lighting make CGC Series ideally suited for CLEANROOM, Hospital, Food processing, and Scientific lab areas, where contamination free environment is a must. Hassle-free, no tools required maintenance.

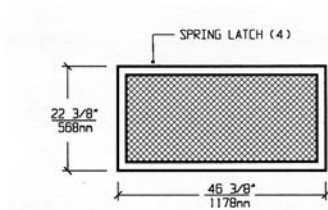
FEATURES

- "Clean Look" Lens Frame with no visible hardware
- No tools required to open Lens Frame for relamping
- Lens Frame is flush with T-Grid and seals to Housing
- Same Housing fits 1", 1-1/2" and 2" standard T-grid ceiling
- Suitable for Class 10 - Class 100,000 Cleanrooms
- Sealed, painted white, 20 gauge Housing seals to grid
- Lens is silicone sealed to extruded Lens Frame
- 2' x 4' nominal Housing size
- Low brightness Lens installed smooth side to room
- Gasketed Access Plate (Optional Internal Junction Box)
- Manufactured in accordance to NSF, FDA, USDA and Federal Standard 209D
- IP-65 rated

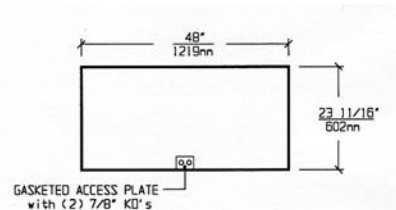
CROSS SECTION



LENS FRAME DIMENSIONS



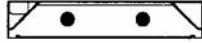
TOP VIEW



SPECIFICATIONS

<p>A. HOUSING Die formed 20 gauge cold rolled steel Housing, with welded seams. Painted white.</p> <p>B. LENS FRAME Heavy aluminum extrusion with sealed mitered corners. Painted white to match Grid.</p> <p>C. GASKET Closed cell gaskets and silicone seal prevent air and contaminants from entering the room.</p> <p>D. LENS Low brightness Lens with prisms up and smooth side to room for ease of cleaning. (See Options).</p> <p>E. LATCHING Two Latches allow to open Lens Frame without use of tools.</p>	<p>F. HINGE Two detachable Hinges for ease of installation and maintenance.</p> <p>G. BALLAST HPF, Class P, Energy saving Ballast. (See Voltage, Ballast Options).</p> <p>H. LAMPS 32W T-8, 28W T-5 or 54W T-5 HO Lamps. See Lamp Options. (Lamps by others).</p> <p>I. FINISH Polyester Powder coat white finish with 92% reflectance.</p> <p>J. UL LISTED Suitable for Wet Locations.</p>
--	--

LAMP SELECTION



LAMPS: (2) 32W T-8
(2) 28W T-5
(2) 54W T-5HO



LAMPS: (3) 32W T-8
(3) 28W T-5
(3) 54W T-5HO



LAMPS: (4) 32W T-8
(4) 28W T-5
(4) 54W T-5HO

ORDERING INFORMATION

CGC-24 -

No. of LAMPS	WATTAGE	VOLTAGE	BALLAST	LENS OPTION	OPTIONS
2=2 Lamps	32=32 Watts	120=120 Volts	EB=Electronic Ballast	12PA=.125" Prism. Acrylic	GF=GLR Fuse
3=3 Lamps	(T-8)	277=277 Volts		15PA=.156" Prism. Acrylic	NL=Night Light (PL-7 or9)
4=4 Lamps	28=28 Watts	347=347 Volts	MB=Magnetic Ballast	15PG=.156" Prism. Glass	DB=Dimming Ballast
6=6 Lamps	(T-5)		EB2=(2) Electr. Ballasts	15PP=.156" Prism. P/C	EM=Emergency Lighting
	54=54 Watts (T-5HO)		EBH=<10% THD El. Ballast	(Other Lens Options available. Consult Factory)	CW=Cold Weather Ballast
					RF=Radio Frequency Interference Filter
					JB=Internal Junction Box
					AHP=Aluminum Housing Painted
					SHP=Stainless Steel Housing, Painted
					SG=Special Grid Housing (Specify Grid)
					(More than one Option can be specified)

EXAMPLE: CGC - 24 - 4 - 32 - 277 - EB - 12PA - GF - NL

DESCRIPTION: **CGC - 24** = Series CGC, 2 feet by 4 feet nominal size
4 = 4 Lamps
32 = 32 Watts T-8 Lamps
277 = 277 Volt Operation
EB = Electronic Ballast
12PA = .125" Thick Prismatic Acrylic
GF = GLR Fuse
NL = Night Light for PL-7 or 9

FIXTURE TYPE		COMMENTS
CATALOG NUMBER	CGC-24-	
JOB NAME		
APPROVAL		
DATE		