

**LIGHTING FOR COMPLEX ENVIRONMENTS**

**2' X 2'**

**APPLICATIONS**

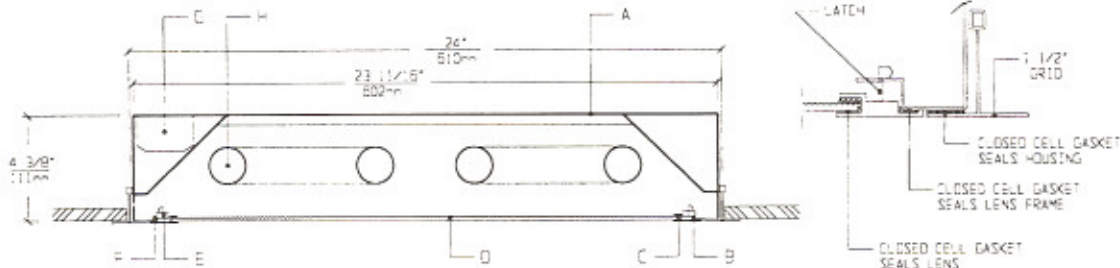
- Cleanrooms
- Food processing centers
- Hospitals
- Pharmaceutical and Biological labs
- Wet Locations

Totally sealed housings with Flush with Grid Lens Frames, gasketed lenses, and uniform lighting make CGE Series ideally suited for CLEANROOM, Hospital, Food processing, and Scientific lab areas, where contamination free environment must be achieved at a lower cost.

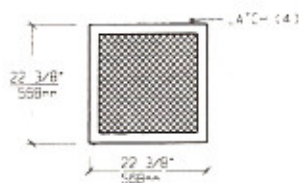
**FEATURES**

- ♦ Sealed, painted white, 20 gauge Housing seals to grid
- ♦ 2' X 2' nominal Housing size
- ♦ Same Housing fits 1" and 1-1/2" standard T-grid ceiling
- ♦ Lens Frame is flush with T-Grid and seals to Housing
- ♦ Lens is gasketed to extruded Lens Frame
- ♦ Suitable for Class 1,000 - Class 100,000 Cleanrooms
- ♦ Low brightness Lens installed smooth side to room
- ♦ No tools required to open Lens Frame for relamping
- ♦ Manufactured in accordance to NSF, FDA, USDA and Federal Standard 209D

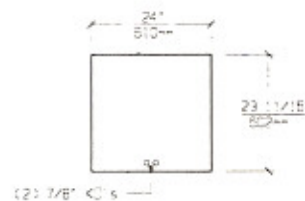
**CROSS SECTION**



**LENS FRAME DIMENSIONS**



**TOP VIEW**



**SPECIFICATIONS**

<b>A. HOUSING</b>	Die formed 20 gauge cold rolled steel Housing, with welded seams. Painted White.	<b>F. HINGE</b>	Two detachable Hinges for ease of installation and maintenance.
<b>B. LENS FRAME</b>	Heavy aluminum extrusion with mitered corners. Painted white to match Grid.	<b>G. BALLAST</b>	HPF, Class P, Energy saving Ballast. (See Voltage, Ballast Options).
<b>C. GASKET</b>	Closed cell gaskets prevent air and contaminants from entering the room.	<b>H. LAMPS</b>	17W T-8, 20W T-12, 40W Biax or 40W U-Lamps. See Lamp Options. (Lamps by others).
<b>D. LENS</b>	Low brightness Lens with prisms up and smooth side to room for ease of cleaning. (See Options).	<b>I. FINISH</b>	Polyester Powder coat white finish with 92% reflectance.
<b>E. LATCHING</b>	Two Latches allow to open Lens Frame without use of tools.	<b>J. UL LISTED</b>	Suitable for Wet Locations.

LAMP SELECTION



LAMPS: (2) 17W T-8  
(2) 20W T-12



LAMPS: (3) 17W T-8  
(3) 20W T-12



LAMPS: (4) 17W T-8  
(4) 20W T-12



LAMPS: (2) 40W U (6")



LAMPS: (2) 40W BIAx



LAMPS: (3) 40W BIAx

ORDERING INFORMATION

CGE - 22 -

No. of LAMPS	WATTAGE	VOLTAGE	BALLAST	LENS OPTION	OPTIONS
2=2 Lamps (All)	17=17 Watts (T-8)	120=120 Volts 277=277 Volts	EB=Electronic Ballast	12PA=.125"Prism. Acrylic 15PA=.156"Prism. Acrylic	EM=Emergency Lighting GF=GLR Fuse
3=3 Lamps (Except U)	20=20 Watts (T-12)	347=347 Volts	MB=Magnetic Ballast	15PG=.156"Prism. Glass 15PP=.156"Prism. P/C	NL=Night Light(PL-7or 9) DB=Dimming Ballast
4=4 Lamps (Except U and Biax)	40U=40 Watts U (6" spacing) 40BX=40 Watts Biax Twin Tube 32U=32 Watts U (6" spacing) 31U=32 Watts U (1-5/8" spacing)		EB2=(2) Electr. Ballasts EBH=<10% THD El. Ballast	UO = UV Absorbing Overlay (Other Lens Options available. Consult Factory)	CW=Cold Weather Ballast RF=Radio Frequency Interference Filter

(More than one Option can be specified)

EXAMPLE: CGE - 22 - 2 - 40U - 277 - EB - 12PA - GF - NL

DESCRIPTION: CGE-22 = Series CGE, 2 feet by 2 feet nominal size  
 2 = 2 Lamps  
 40U = 40 Watts U Lamps  
 277 = 277 Volt Operation  
 EB = Electronic Ballast  
 12PA = .125" Thick Prismatic Acrylic  
 GF = GLR Fuse  
 NL = Night Light for PL - 7 or 9

FIXTURE TYPE		COMMENTS
CATALOG NUMBER	CGE-22-	
JOB NAME		
APPROVAL		
DATE		

Dimensions and Specifications subject to change without notice  
 Fixture guaranteed for one year against mechanical defects in manufacture.  
 2-97 CGE-22