

LIGHTING FOR COMPLEX ENVIRONMENTS

2' X 2'

APPLICATIONS

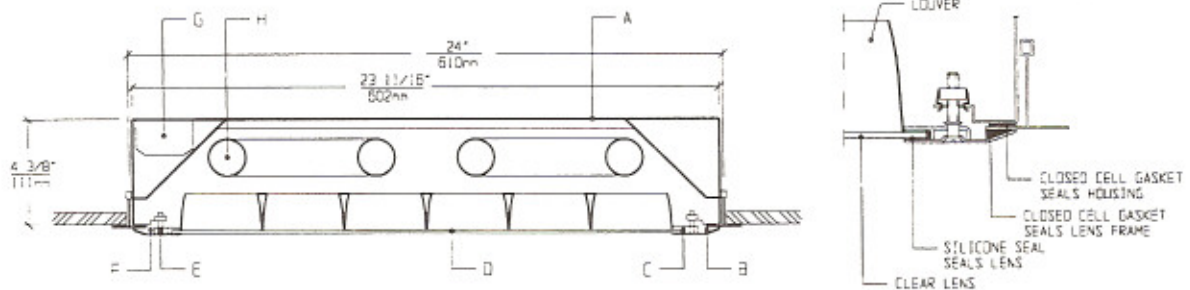
- Cleanrooms
- Food processing centers
- Hospitals
- Pharmaceutical and Biological labs
- Wet Locations

Totally sealed housings with sealed overlap Lens Frames, silicone set lenses, captive flat head screws, and glare free lighting make CGK Series ideally suited for CLEANROOM, Hospital, Food processing, and Scientific lab areas, where contamination free environment is a must.

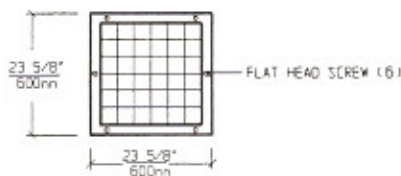
FEATURES

- ♦ 2' X 2' sealed, painted white, 20 ga. Housing seals to grid
- ♦ Suitable for high pressure Hosedown
- ♦ Same Housing fits 1", 1-1/2" and 2" standard T-grid ceiling
- ♦ Overlap 18 ga. Lens Frame is gasketed and seals to grid
- ♦ Louver and Lens are silicone sealed to Lens Frame
- ♦ Gasketed Access Plate (Optional Internal Junction Box)
- ♦ Parabolic Louver and clear Lens for glare free illumination
- ♦ Captive flat head Screws (6)
- ♦ Manufactured in accordance to NSF, FDA, USDA and Federal Standard 209D
- ♦ Suitable for Class 10 - Class 100,000 Cleanrooms

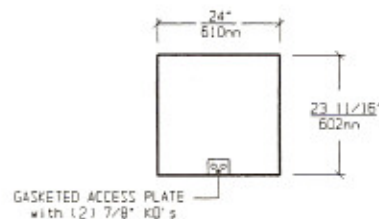
CROSS SECTION



LENS FRAME DIMENSIONS



TOP VIEW



SPECIFICATIONS

- | | |
|--|---|
| <p>A. HOUSING Die formed 20 gauge cold rolled steel Housing, with welded seams. Painted white.</p> <p>B. LENS FRAME Die formed one piece 18 gauge cold rolled steel Lens Frame. Painted white.</p> <p>C. GASKET Closed cell gaskets and silicone seal prevent air and contaminants from entering the room.</p> <p>D. SHIELDING Aluminum parabolic louver protected by clear lens. (See Options for Louver and Lens selections).</p> <p>E. FASTENERS Flush, captive stainless steel screws apply even pressure against Lens Frame.</p> | <p>F. HINGE Two "shadow free" detachable chains for ease of installation and maintenance.</p> <p>G. BALLAST HPF, Class P, Energy saving Ballast (See Voltage, Ballast Options).</p> <p>H. LAMPS 17W T-8, 20W T-12, 40W Biax or 40W U Lamps. See Lamp Options. (Lamps by others).</p> <p>I. FINISH Polyester Powder coat white finish with 92% reflectance.</p> <p>J. UL LISTED Suitable for Wet Locations.</p> |
|--|---|

LAMP SELECTION



LAMPS: (2) 17W T-8
(2) 20W T-12



LAMPS: (3) 17W T-8
(3) 20W T-12



LAMPS: (4) 17W T-8
(4) 20W T-12



LAMPS: (2) 40W U (6")



LAMPS: (2) 40W BIAx



LAMPS: (3) 40W BIAx

ORDERING INFORMATION

CGK - 22 -

No. of LAMPS	WATTAGE	VOLTAGE	BALLAST	LENS / LOUVER	OPTIONS
2=2 Lamps (All)	17=17 Watts (T- 8)	120=120 Volts 277=277 Volts	EB=Electronic Ballast	LENS 12CA=.125"Clear Acrylic	TP=Tamperproof screws GF=GLR Fuse
3=3 Lamps (Except U)	20=20 Watts (T-12)	347=347 Volts	MB=Magnetic Ballast	15CA=.156"Clear Acrylic 15CP=.156"Clear P/C	NL=Night Light (PL-7or 9) DB=Dimming Ballast
4=4 Lamps (Except U and Biax)	40U=40 Watts U (6" spacing) 40BX=40 Watts Biax Twin Tube		EB2=(2) Electr. Ballasts EBH=<10% THD El. Ballast	UO = UV Absorbing Overlay LOUVER 15AL=1 1/2"Hx3X3 Parabolic Al. Louver 5PL=1/2"Hx3/4X3/4 Parabolic Louver (Other Lens / Louver Options available.)	EM=Emergency Lighting CW=Cold Weather Ballast RF=Radio Frequency Interference Filter JB=Internal Junction Box AHP=Aluminum Housing Painted AFP=Aluminum Lens Frame, Painted AFA=Aluminum Lens Frame, Anodized SHP=Stainless Steel Housing, Painted SFP=Stainless Steel Lens Frame, Painted SFN=Stainless Steel Lens Frame, Natural (More than one Option can be specified)

EXAMPLE: CGK - 22 - 2 - 40U - 277 - EB - 12CA/15AL - GF - NL

DESCRIPTION: CGK-22 = Series CGK, 2 feet by 2 feet nominal size
 2 = 2 Lamps
 40U = 40 Watts U Lamps
 277 = 277 Volt Operation
 EB = Electronic Ballast
 12CA/15AL = .125" Thick Clear Acrylic Lens with 1 1/2" high Parabolic Aluminum Louver
 GF = GLR Fuse
 NL = Night Light for PL - 7 or 9

FIXTURE TYPE		COMMENTS
CATALOG NUMBER	CGK-22-	
JOB NAME		
APPROVAL		
DATE		

Dimensions and Specifications subject to change without notice
 Fixture guaranteed for one year against mechanical defects in manufacture.
 2-97 CGK-22