

APPLICATIONS

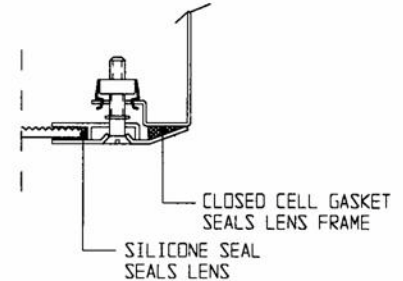
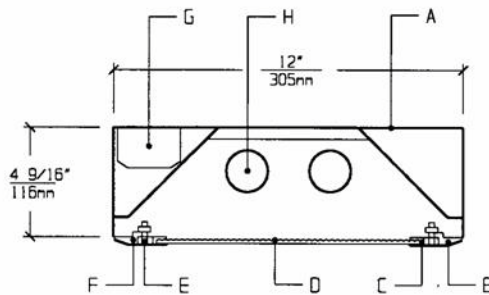
- Cleanrooms
- Food processing centers
- Hospitals
- Pharmaceutical and Biological labs
- Wet Locations

Totally sealed Housings with sealed overlap Lens Frames, silicone set lenses, captive flat head screws, and uniform lighting make CSA Series ideally suited for CLEANROOM, Hospital, Food processing, and Scientific lab areas, where contamination free environment is a must.

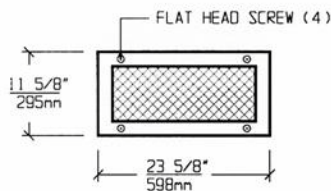
FEATURES

- 1' X 2' low profile, sealed, painted white, 20ga. Housing
- Suitable for high pressure Hosedown
- (4) gasketed mounting holes
- Overlap Lens Frame is gasketed and seals to Housing
- Lens is silicone sealed to Lens Frame
- Gasketed Access Plate (Optional Internal Junction Box)
- Low brightness Lens installed smooth side to room
- Captive flat head Screws (4)
- Manufactured in accordance to NSF, FDA, USDA and Federal Standard 209D
- Suitable for Class 10 - Class 100,000 Cleanrooms
- IP-65 rated

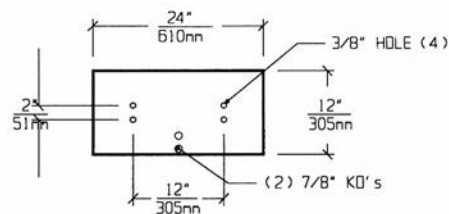
CROSS SECTION



LENS FRAME DIMENSIONS



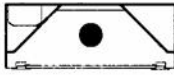
TOP VIEW



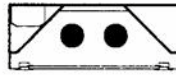
SPECIFICATIONS

| | |
|--|---|
| <p>A. HOUSING Die formed 20 gauge cold rolled steel Housing, with welded seams. Painted white.</p> <p>B. LENS FRAME Die formed one piece 18 gauge cold rolled steel Lens Frame. Painted white.</p> <p>C. GASKET Closed cell gaskets and silicone seal prevent air and contaminants from entering the room.</p> <p>D. LENS Low brightness Lens with prisms up and smooth side to room for ease of cleaning. (See Options).</p> <p>E. FASTENERS Flush, captive stainless steel screws apply even pressure against Lens Frame.</p> | <p>F. HINGE Two "shadow free" detachable chains for ease of installation and maintenance.</p> <p>G. BALLAST HPF, Class P, Energy saving Ballast (See Voltage, Ballast Options).</p> <p>H. LAMPS 17W T-8, 14W T-5, 24W T-5 HO, 40W Biax Lamps. See Lamp Options. (Lamps by others).</p> <p>I. FINISH Polyester Powder coat white finish with 92% reflectance.</p> <p>J. UL LISTED Suitable for Wet Locations.</p> |
|--|---|

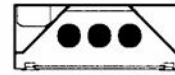
LAMP SELECTION



LAMPS: (1) 17W T-8
(1) 14W T-5 / 24W T-5 HO
(1) 40W BIAx



LAMPS: (2) 17W T-8
(2) 14W T-5 / 24W T-5 HO



LAMPS: (3) 17W T-8
(3) 14W T-5 / 24W T-5 HO

ORDERING INFORMATION

CSA-12 -

| No. of LAMPS | WATTAGE | VOLTAGE | BALLAST | LENS OPTION | OPTIONS |
|--------------------------|-----------------------------------|--------------------------------|-----------------------------|--|--|
| 1=1 Lamp (All) | 17=17 Watts (T-8) | 120=120 Volts 277=277 Volts | EB=Electronic Ballast | 12PA=.125" Prism. Acrylic 15PA=.156" Prism. Acrylic | TP=Tamperproof Screws GF=GLR Fuse |
| 2=2 Lamps (Except BX) | 14=14 Watts (T-5) | 347=347 Volts | MB=Magnetic Ballast | 15PG=.156" Prism. Glass 18PP=.187" Prism. P/C | NL=Night Light (PL-7 or 9) DB=Dimming Ballast |
| 3=3 Lamps (Except BX) | 24=24 Watts (T-5 HO) | | EB2=(2) Electr. Ballasts | UO=UV Absorbing Overlay | EM=Emergency Lighting CW=Cold Weather Ballast |
| | 40BX=40 Watts (Biax Twin Tube) | | EBH=<10% THD El. Ballast | (Other Lens Options available. Consult Factory) | RF=Radio Frequency Interference Filter JB=Internal Junction Box AHP=Aluminum Housing Painted AFP=Aluminum Lens Frame, Painted AFA=Aluminum Lens Frame, Anodized SHP=Stainless Steel Housing, Painted SFP=Stainless Steel Lens Frame, Painted SFN=Stainless Steel Lens Frame, Natural |

(More than one Option
can be specified)

EXAMPLE: CSA - 12 - 2 - 17 - 277 - EB - 12PA - GF - NL

DESCRIPTION: **CSA - 12** = Series CSA, 1 foot by 2 feet nominal size
2 = 2 Lamps
17 = 17 Watts T-8 Lamp
277 = 277 Volt Operation
EB = Electronic Ballast
12PA = .125" Thick Prismatic Acrylic
GF = GLR Fuse
NL = Night Light for PL-7 or 9

| | | |
|----------------|---------|----------|
| FIXTURE TYPE | | COMMENTS |
| CATALOG NUMBER | CSA-12- | |
| JOB NAME | | |
| APPROVAL | | |
| DATE | | |