

**LIGHTING FOR COMPLEX ENVIRONMENTS**

**2' X 4'**

**APPLICATIONS**

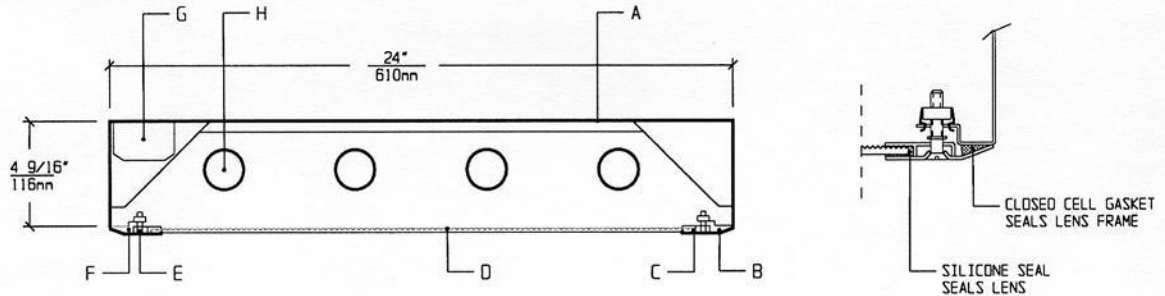
- Cleanrooms
- Food processing centers
- Hospitals
- Pharmaceutical and Biological labs
- Wet Locations

Totally sealed Housings with sealed overlap Lens Frames, silicone set lenses, captive flat head screws, and uniform lighting make CSA Series ideally suited for CLEANROOM, Hospital, Food processing, and Scientific lab areas, where contamination free environment is a must.

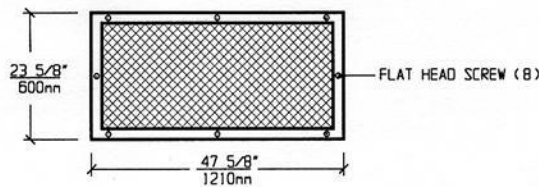
**FEATURES**

- 2' X 4' low profile, sealed, painted white, 20ga. Housing
- Suitable for high pressure Hosedown
- (4) gasketed mounting holes
- Overlap 18ga. Lens Frame is gasketed and seals to grid
- Lens is silicone sealed to Lens Frame
- Gasketed Access Plate (Optional Internal Junction Box)
- Low brightness Lens installed smooth side to room
- Captive flat head Screws (8)
- Manufactured in accordance to NSF, FDA, USDA and Federal Standard 209D
- Suitable for Class 10 - Class 100,000 Cleanrooms
- IP-65 rated

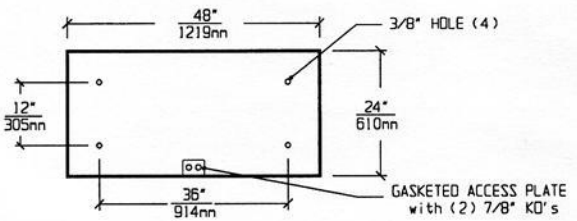
**CROSS SECTION**



**LENS FRAME DIMENSIONS**



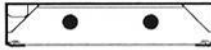
**TOP VIEW**



**SPECIFICATIONS**

|   |  |
|---|--|
| <p><b>A. HOUSING</b> Die formed 20 gauge cold rolled steel Housing, with welded seams. Painted white.</p> <p><b>B. LENS FRAME</b> Die formed one piece 18 gauge cold rolled steel Lens Frame.</p> <p><b>C. GASKET</b> Closed cell gaskets and silicone seal prevent air and contaminants from entering the room.</p> <p><b>D. LENS</b> Low brightness Lens with prisms up and smooth side to room for ease of cleaning. (See Options).</p> <p><b>E. FASTENERS</b> Flush, captive stainless steel screws apply even pressure against Lens Frame.</p> | <p><b>F. HINGE</b> Two "shadow free" detachable chains for ease of installation and maintenance.</p> <p><b>G. BALLAST</b> HPF, Class P, Energy saving Ballast (See Voltage, Ballast Options).</p> <p><b>H. LAMPS</b> 32W T-8, 28W T-5 or 54W T-5 HO Lamps. See Lamp Options (Lamps by others).</p> <p><b>I. FINISH</b> Polyester Powder coat white finish with 92% reflectance.</p> <p><b>J. UL LISTED</b> Suitable for Wet Locations.</p> |
|---|--|

**LAMP SELECTION**



LAMPS: (2) 32W T-8  
(2) 28W T-5  
(2) 54W T-5HO



LAMPS: (3) 32W T-8  
(3) 28W T-5  
(3) 54W T-5HO



LAMPS: (4) 32W T-8  
(4) 28W T-5  
(4) 54W T-5HO

**ORDERING INFORMATION**

**CSA-24 -**

| No. of LAMPS | WATTAGE             | VOLTAGE       | BALLAST                  | LENS OPTION                                     | OPTIONS                                 |
|--------------|---------------------|---------------|--------------------------|---|---|
| 2=2 Lamps    | 32=32 Watts         | 120=120 Volts | EB=Electronic Ballast    | 12PA=.125" Prism. Acrylic                       | TP=Tamperproof Screws                   |
| 3=3 Lamps    | (T-8)               | 277=277 Volts |                          | 15PA=.156" Prism. Acrylic                       | GF=GLR Fuse                             |
| 4=4 Lamps    | 28=28 Watts         | 347=347 Volts | MB=Magnetic Ballast      | 15PG=.156" Prism. Glass                         | NL=Night Light (PL-7 or 9)              |
| 6=6 Lamps    | (T-5)               |               | EB2=(2) Electr. Ballasts | 18PP=.187" Prism. P/C                           | DB=Dimming Ballast                      |
|              | 54=54 Watts (T-5HO) |               | EBH=<10% THD El. Ballast | UO=UV Absorbing Overlay                         | EM=Emergency Lighting                   |
|              |                     |               |                          | (Other Lens Options available. Consult Factory) | CW=Cold Weather Ballast                 |
|              |                     |               |                          |   | RF=Radio Frequency Interference Filter  |
|              |                     |               |                          |   | JB=Internal Junction Box                |
|              |                     |               |                          |   | AHP=Aluminum Housing Painted            |
|              |                     |               |                          |   | AFP=Aluminum Lens Frame, Painted        |
|              |                     |               |                          |   | AFA=Aluminum Lens Frame, Anodized       |
|              |                     |               |                          |   | SHP=Stainless Steel Housing, Painted    |
|              |                     |               |                          | (More than one Option can be specified)         | SFP=Stainless Steel Lens Frame, Painted |
|              |                     |               |                          |   | SFN=Stainless Steel Lens Frame, Natural |

**EXAMPLE: CSA - 24 - 4 - 32 - 277 - EB - 12PA - GF - NL**

**DESCRIPTION:** **CSA - 24** = Series CSA, 2 feet by 4 feet nominal size  
**4** = 4 Lamps  
**32** = 32 Watts T-8 Lamps  
**277** = 277 Volt Operation  
**EB** = Electronic Ballast  
**12PA** = .125" Thick Prismatic Acrylic  
**GF** = GLR Fuse  
**NL** = Night Light for PL-7 or 9

| FIXTURE TYPE   |         | COMMENTS |
|----------------|---------|----------|
| CATALOG NUMBER | CSA-24- |          |
| JOB NAME       |         |          |
| APPROVAL       |         |          |
| DATE           |         |          |

Dimensions and Specifications subject to change without notice  
 Fixture guaranteed for one year against mechanical defects in manufacture.  
 Copyright 2-10 CSA-24