

LIGHTING FOR COMPLEX ENVIRONMENTS

2' X 4'

APPLICATIONS

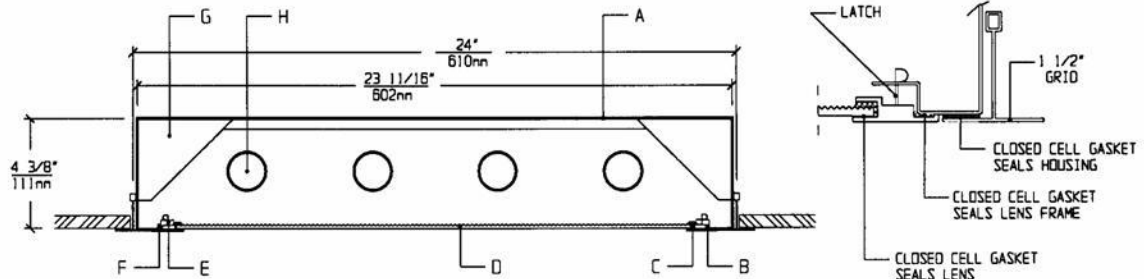
- Medical Test labs
- Cleanrooms
- Hospitals
- Pharmaceutical and Biological labs
- Wet Locations

Totally sealed aluminum Housings with aluminum Lens Frames, non-ferrous hardware, gasketed lenses, and uniform lighting make MGE Series ideally suited for MRI applications, Hospital, and Scientific lab areas, where magnetic free environment must be achieved at a lower cost.

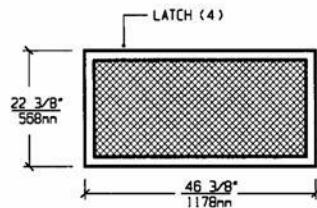
FEATURES

- Sealed, painted white, 20 gauge aluminum Housing
- Aluminum Lens Frame seals to Housing
- Non-ferrous hardware throughout
- Same Housing fits 1", 1-1/2" and 2" standard T-grid ceiling
- 2' x 4' nominal Housing size
- Lens is gasketed to extruded Lens Frame
- Suitable for Class 1,000 - Class 100,000 Cleanrooms
- Low brightness Lens installed smooth side to room
- No tools required to open Lens Frame for relamping
- Manufactured in accordance to NSF, FDA, USDA and Federal Standard 209D

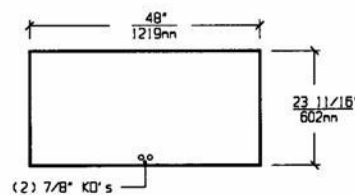
CROSS SECTION



LENS FRAME DIMENSIONS



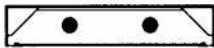
TOP VIEW



SPECIFICATIONS

<p>A. HOUSING Die formed 20 gauge aluminum Housing, with welded seams. Painted white.</p> <p>B. LENS FRAME Heavy aluminum extrusion with sealed mitered corners. Painted white to match Grid.</p> <p>C. GASKET Closed cell gaskets prevent air and contaminants from entering the room.</p> <p>D. LENS Low brightness Lens with prisms up and smooth side to room for ease of cleaning. (See Options).</p> <p>E. LATCHING Two non-ferrous Latches allow to open Lens Frame without use of tools.</p>	<p>F. HINGE Two detachable non-ferrous Hinges for ease of installation and maintenance.</p> <p>G. BALLAST HPF, Class P, Energy saving Ballast. Remotely mounted. (See Voltage, Ballast Options).</p> <p>H. LAMPS 32W T-8, 28W T-5 or 54W T-5 HO Lamps. See Lamp Options (Lamps by others).</p> <p>I. FINISH Polyester Powder coat white finish with 92% reflectance.</p> <p>J. UL LISTED Suitable for Wet Locations.</p>
---	---

LAMP SELECTION



LAMPS: (2) 32W T-8
(2) 28W T-5
(2) 54W T-5HO



LAMPS: (3) 32W T-8
(3) 28W T-5
(3) 54W T-5HO



LAMPS: (4) 32W T-8
(4) 28W T-5
(4) 54W T-5HO

ORDERING INFORMATION

MGE-24 -

No. of LAMPS	WATTAGE	VOLTAGE	BALLAST	LENS OPTION	OPTIONS
2=2 Lamps	32=32 Watts	120=120 Volts	EB=Electronic Ballast	12PA=.125" Prism. Acrylic	GF=GLR Fuse
3=3 Lamps	(T-8)	277=277 Volts	MB=Magnetic Ballast	15PA=.156" Prism. Acrylic	NL=Night Light (PL-7 or PL-9)
4=4 Lamps	28=28 Watts	347=347 Volts	EB2=(2) Electr. Ballasts	15PG=.156" Prism. Glass	DB=Dimming Ballast
6=6 Lamps	(T-5)		EBH=<10% THD El. Ballast	15PP=.156" Prism. P/C	EM=Emergency Lighting
	54=54 Watts				CW=Cold Weather Ballast
	(T-5HO)				RF=Radio Frequency Interference Filter

(Other Lens Options available. Consult Factory)

(Ballasts must be remotely mounted)

(More than one Option can be specified)

EXAMPLE: MGE - 24 - 4 - 32 - 277 - EB - 12PA

DESCRIPTION: MGE - 24 = Series MGE, 2 feet by 4 feet nominal size
 4 = 4 Lamps
 32 = 32 Watts T-8 Lamps
 277 = 277 Volt Operation
 EB = Electronic Ballast (remotely mounted)
 12PA = .125" Thick Prismatic Acrylic

FIXTURE TYPE		COMMENTS
CATALOG NUMBER	MGE-24-	
JOB NAME		
APPROVAL		
DATE		

Dimensions and Specifications subject to change without notice
 Fixture guaranteed for one year against mechanical defects in manufacture.
 Copyright 2-10 MGE-24