

**LIGHTING FOR COMPLEX ENVIRONMENTS**

**1' X 2'**

**APPLICATIONS**

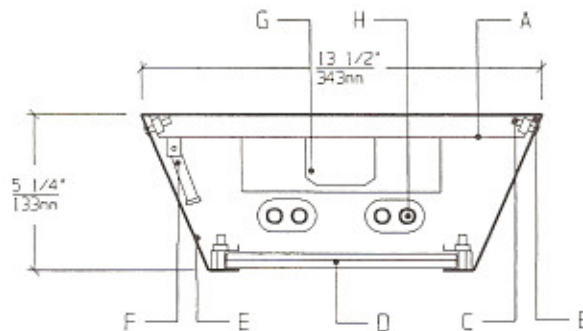
- Detention Cell Lighting
- Prison Day Rooms and Common Areas
- Psychiatric Ward Lighting
- Rehabilitation Centers
- Dormitories

Heavy gauge housings with concealed hinges, unbreakable lenses, tamperproof screws and absence of cracks and crevices make DSB Series ideally suited for DETENTION and SECURITY areas, where physical attack or abuse are expected.

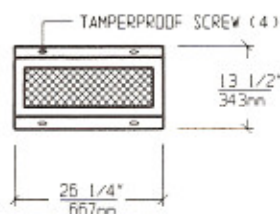
**FEATURES**

- ♦ Hinged, one piece, heavy gauge Lens Housing
- ♦ 1' X 2' nominal Housing size
- ♦ One piece Backpan with a blade trap
- ♦ Exterior / Interior Lens system provides protection and uniform illumination
- ♦ Tamperproof Screws with captive cage nuts
- ♦ Concealed Hinge to optimize security
- ♦ Removable Power Tray
- ♦ Lens secured to Lens Frame by through studs and heavy gauge steel rails
- ♦ Maximum, Medium, Minimum or Super Maximum security

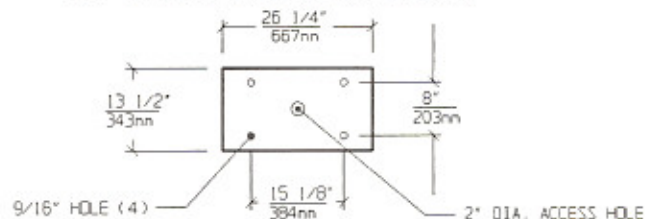
**CROSS SECTION**



**LENS HOUSING DIMENSIONS**



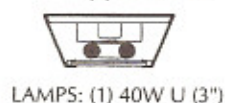
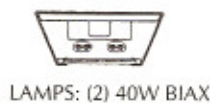
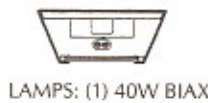
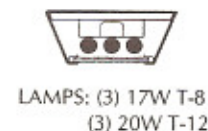
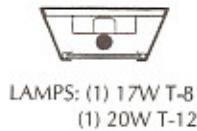
**TOP VIEW / MOUNTING DIMENSIONS**



**SPECIFICATIONS**

<p><b>A. BACKPAN</b> Die formed cold rolled steel Backpan, with contraband drop slot. Gauge to match Housing.</p> <p><b>B. GASKET</b> Polyurethane Gasket around inside of Lens Housing to prevent light leaks.</p> <p><b>C. FASTENERS</b> Captive tamperproof fasteners. (Torx head standard. For others see Options).</p> <p><b>D. LENS</b> Per spec. Specify Lenses for Room / Lamp sides. (See Lens Options).</p> <p><b>E. HOUSING</b> Die formed one piece cold rolled steel Lens Housing with welded seams. (Specify gauge).</p>	<p><b>F. HINGE</b> Heavy gauge internal security Hinge supports Lens Housing during relamping.</p> <p><b>G. BALLAST</b> HPF, Class P, Energy saving Ballast (See Voltage, Ballast Options).</p> <p><b>H. LAMPS</b> 17W T-8, 20W T-12, 40W Biax or 40W U Lamps. See Lamp Options. (Lamps by others).</p> <p><b>I. FINISH</b> Polyester Powder coat white finish with 92% reflectance.</p> <p><b>J. UL LISTED</b> Suitable for Damp Locations.</p>
--	--

**LAMP SELECTION**



**ORDERING INFORMATION**

**DSB-12 -**

GAUGE	No. of LAMPS	WATTAGE	VOLTAGE	BALLAST	LENS OPTION	OPTIONS
T=12 Gauge Super Max.	1=1 Lamp (All)	17=17 Watts (T-8)	120=120 Volts 277=277 Volts	EB=Electronic Ballast	<b>ROOM SIDE</b> 18CP=.187"Clear P/C	AH=Allen Head Screws GF=GLR Fuse
F=14 Gauge Maximum	2=2 Lamps (Except U)	20=20 Watts (T-12)	347=347 Volts	MB=Magnetic Ballast	25CP=.250"Clear P/C 37CP=.375"Clear P/C	NL*=Night Light (PL-7or 9) DB=Dimming Ballast
S=16 Gauge Medium	3=3 Lamps (Except U and Biax)	40U=40 Watts U (3" Spacing)		EB2=(2) Electr. Ballasts	50CP=.500"Clear P/C 18TG=.187"Temp.Glass	EM=Emergency Lighting CW=Cold Weather Ballast
E=18 Gauge Minimum Security		40BX=40 Watts Biax Twin Tube		EBH=<10% THD El. Ballast	25TG=.250"Temp.Glass 37TG=.375"Temp.Glass 50TG=.500"Temp.Glass	(More than one Option can be specified)
<b>LAMP SIDE</b>						* - Consult Factory
12PA=.125"Prism. Acrylic						
15PP=.156"Prism. P/C						
18PP=.187"Prism. P/C						
15PG=.156"Prism. Temp. Glass						
UO = UV Absorbing Overlay						
(Other Lens Options Available. Consult Factory)						

**EXAMPLE: DSB - 12 - F - 2 - 40BX - 277 - EB - 25CP/15PP - AH**

**DESCRIPTION:** DSB - 12 = Series DSB, 1 foot by 2 feet nominal size  
 F = 14 Gauge Cold Rolled Steel - Maximum Security  
 2 = 2 Lamps  
 40BX = 40 Watts Biax Twin Tube Lamps  
 277 = 277 Volt Operation  
 EB = Electronic Ballast  
 25CP/15PP = .250" Thick Clear Polycarbonate on Room Side / .156" Thick Prismatic Polycarbonate on Lamp Side  
 AH = Allen Head Screws in Lens Frame

FIXTURE TYPE		COMMENTS
CATALOG NUMBER	DSB-12-	
JOB NAME		
APPROVAL		
DATE		

Dimensions and Specifications subject to change without notice  
 Fixture guaranteed for one year against mechanical defects in manufacture.  
 2-97 DSB-12