

LIGHTING FOR COMPLEX ENVIRONMENTS

1 ft. long

APPLICATIONS

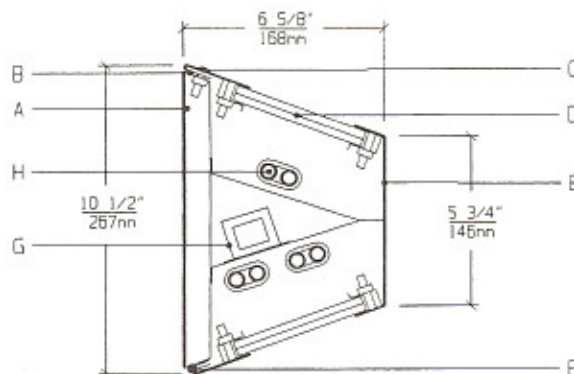
- Detention Cell Lighting
- Prison Day Rooms and Common Areas
- Psychiatric Ward Lighting
- Rehabilitation Centers
- Dormitories

Heavy gauge housings with concealed hinges, unbreakable lenses, tamperproof screws and absence of cracks and crevices make DWB Series ideally suited for DETENTION and SECURITY areas, where physical attack or abuse are expected.

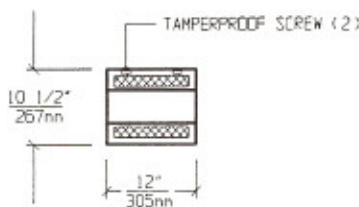
FEATURES

- ◆ Hinged, one piece, heavy gauge Lens Housing
- ◆ Maximum, Medium, Minimum or Super Maximum security
- ◆ One piece Backplate with a blade trap
- ◆ Exterior / Interior Lens system provides protection and uniform illumination
- ◆ Tamperproof Screws with captive cage nuts
- ◆ Concealed Hinge with welded pin end to optimize security
- ◆ Removable Power Tray
- ◆ Lens secured to Lens Housing by through studs and heavy gauge steel rails
- ◆ Uplight and Downlight can be switched independently

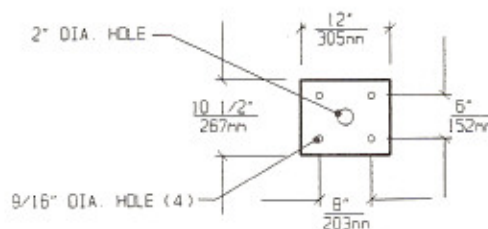
CROSS SECTION



LENS HOUSING DIMENSIONS



BACK VIEW / MOUNTING DIMENSIONS



SPECIFICATIONS

<p>A. BACKPLATE Die formed cold rolled steel Backplate, with contraband drop slot. Gauge to match Housing.</p> <p>B. GASKET Polyurethane Gasket around inside of Lens Housing to prevent light leaks.</p> <p>C. FASTENERS Captive tamperproof fasteners (Torx head standard. For others see Options).</p> <p>D. LENS Per spec. Specify Lenses for Room / Lamp sides. (See Lens Options).</p> <p>E. HOUSING Die formed one piece cold rolled steel Lens Housing with welded seams. (Specify gauge).</p>	<p>F. HINGE Heavy gauge internal security Hinge supports Lens Housing during relamping.</p> <p>G. BALLAST NPF, self-start, Class P, Ballast (See Voltage, Ballast Options).</p> <p>H. LAMPS 13W Biax Twin Tube Lamps. See Lamp Options. (Lamps by others).</p> <p>I. FINISH Polyester Powder coat white finish with 92% reflectance.</p> <p>J. UL LISTED Suitable for Damp Locations.</p>
---	--

LAMP SELECTION



LAMPS: (1) Up / (1) Down
13W BIAx



LAMPS: (1) Up / (2) Down
13W BIAx



LAMPS: (2) Up / (1) Down
13W BIAx



LAMPS: (2) Up / (2) Down
13W BIAx

ORDERING INFORMATION

DWB-1 -

GAUGE	No. of LAMPS	WATTAGE	VOLTAGE	BALLAST	LENS OPTIONS	OPTIONS
T=12 Gauge Super Max.	UP / DOWN 1=1 Lamp	13=13Watts Biax	120=120Volts 277=277Volts	EB=Electronic Ballast	ROOM SIDE 18CP=.187"Clear P/C	AH = Allen Head Screws GF = GLR Fuse
F=14 Gauge Maximum	2=2 Lamps	Twin Tube	347=347Volts	MB=Magnetic Ballast	25CP=.250"Clear P/C 37CP=.375"Clear P/C	NL = Night Light (PL-7or 9)
S=16 Gauge Medium				EB2=(2) Electr. Ballasts	50CP=.500"Clear P/C 18TG=.187"Temp.Glass	
E=18 Gauge Minimum Security				MB2=(2) Magnet. Ballasts	25TG=.250"Temp.Glass 37TG=.375"Temp.Glass 50TG=.500"Temp.Glass	(More than one Option can be specified)

LAMP SIDE

- 12PA=.125"Prism. Acrylic
 - 15PP=.156"Prism. P/C
 - 18PP=.187"Prism. P/C
 - 15PG=.156"Prism. Temp. Glass
 - UO = UV Absorbing Overlay
- (Other Lens Options Available.
Consult Factory)

EXAMPLE: DWB - 1 - F - 1/2 - 13 - 277 - MB - 25CP/15PP - AH

DESCRIPTION: DWB - 1 = Series DWB, 1 foot nominal size
 F = 14 Gauge Cold Rolled Steel - Maximum Security
 1/2 = 1 Lamp Up and 2 Lamps Down
 13 = 13 Watts Biax Twin Tube
 277 = 277 Volt Operation
 MB = Magnetic Ballast
 25CP/15PP = .250" Thick Clear Polycarbonate on Room Side / .156" Thick Prismatic Polycarbonate on Lamp Side
 AH = Allen Head Screws in Lens Housing

FIXTURE TYPE		COMMENTS
CATALOG NUMBER	DWB-1-	
JOB NAME		
APPROVAL		
DATE		

Dimensions and Specifications subject to change without notice
 Fixture guaranteed for one year against mechanical defects in manufacture.
 2-97 DWB-1