

LIGHTING FOR COMPLEX ENVIRONMENTS

APPLICATIONS

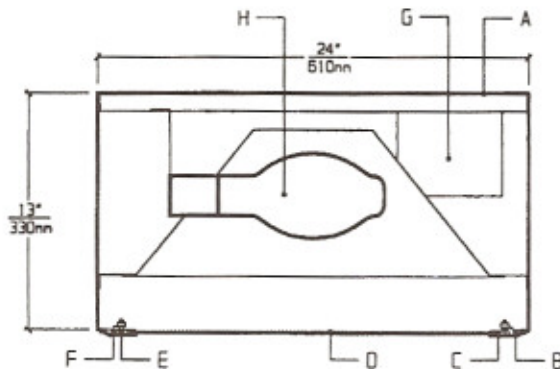
- Schools / Universities
- Apartments / Condominiums / Public Housing
- Convenience Stores
- Government Facilities
- Hospitals

Welded housings with unbreakable lenses and tamperproof screws help VSH Series withstand severe punishment, and make them ideally suited for VANDAL and HIGH ABUSE areas, where deliberate tampering is expected..

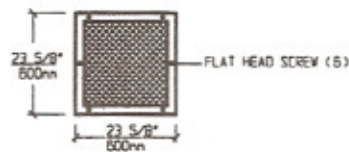
FEATURES

- 19 gauge die formed Housing, painted white
- 24" x 24" nominal size
- Overlap one piece 18 gauge Lens Frame
- Suitable for high pressure Hosedown
- Captive Tamperproof Screws with captive cage nuts
- High Impact low brightness Lens (See Options)
- Non-corrosive durable coating
- Maintenance free, one time installation
- Stands up to physical impact and tampering

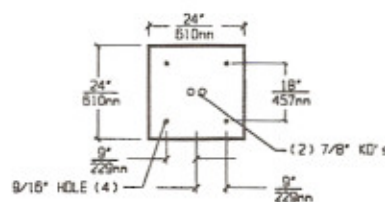
CROSS SECTION



LENS FRAME DIMENSIONS



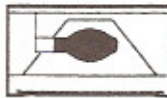
TOP VIEW



SPECIFICATIONS

A. HOUSING	Die formed 19 gauge cold rolled steel Housing, with welded seams. Painted white.	F. HINGE	Two "shadow free" detachable chains for ease of installation and maintenance.
B. LENS FRAME	Die formed one piece 18 gauge cold rolled steel Lens Frame. Painted white.	G. BALLAST	HPF, core and coil Ballast (See Voltage, Ballast Options).
C. GASKET	Closed cell gaskets prevent moisture from entering the fixture.	H. LAMPS	Up to 400 W HPS, Metal Halide or Mercury Vapor Lamps. See Lamp Options (Lamps by others).
D. LENS	Low brightness high impact Lens (See Options).	I. FINISH	Polyester Powder coat white finish with 92% reflectance.
E. FASTENERS	Captive stainless steel tamperproof screws apply even pressure against Lens Frame.	J. UL LISTED	Suitable for Wet Locations.

LAMP SELECTION



LAMPS: (1) up to 400W HPS, Metal Halide or Mercury Vapor

ORDERING INFORMATION

VSH-24 -

WATTAGE	LAMP TYPE	VOLTAGE	LENS OPTION	OPTIONS
100=100 Watts	M=Metal Halide	120=120 Volts	15PG=.156" Prism. Glass	TP=Tamperproof Screws
150=150 Watts	S=High Pressure Sodium	208=208 Volts	15PP=.156" Prism. P/C	GF=GLR Fuse
175=175 Watts		240=240 Volts	15CP=.156" Clear P/C	QS=Quartz Socket
200=200 Watts	MV=Mercury Vapor	277=277 Volts		QR=Quartz Restrike System
250=250 Watts		DT=Dual Tap		
400=400 Watts		QT=Quad Tap		

(More than one Option can be specified)

EXAMPLE: VSH - 24 - 250 - M - 277 - 15PG - GF

DESCRIPTION: VSH - 24 = Series VSH, 24 X 24 inches nominal size
 250 = 250 Watts
 M = Metal Halide lamp
 277 = 277 Volt Operation
 15PG = .156" Thick Prismatic Glass
 GF = GLR Fuse

FIXTURE TYPE		COMMENTS
CATALOG NUMBER	VSH-24-	
JOB NAME		
APPROVAL		
DATE		

Dimensions and Specifications subject to change without notice
 Fixture guaranteed for one year against mechanical defects in manufacture.
 Copyright 2-99 VSH-24